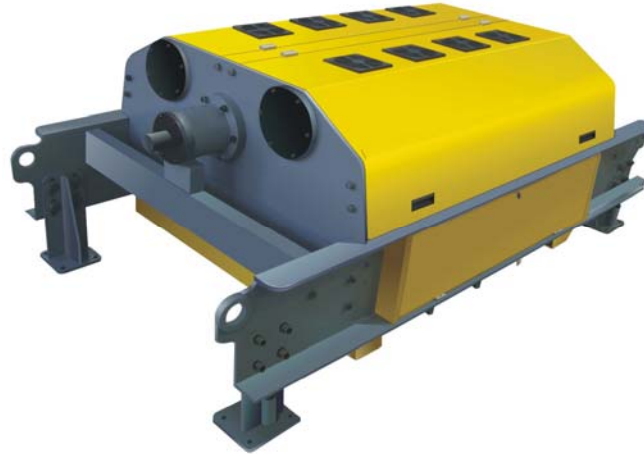


TJQ6000 ELECTRICAL JACQUARD HEAD

Model: TJQ-6000



TJQ6000 is developed by Zhejiang University, FieldBus® Technology is the key of Control Software and automatic control system. Connected with a USB socket achieved an un-limitation store of Pattern. The control system are based on network technology and formed an entire digital communication between production and pattern design.

Characteristics:

- Patented Shedding design, the lifting Blade is moving vertically instead of Arc track to enhance stable of Shedding.
- High Speed ARM Process Unit, all circuited are Cooperated in this Process unit to eliminate the affection of external moule
- Based on uClinux® Operation system, Internet monitoring to all machines
- Stable Closed Hook Lifting device

Easy Control Touch Screen Panel:



- Patented Shedding design, the lifting Blade is moving vertically instead of Arc track to enhance stable of Shedding.

MODEL: TJQ6000 Specification Table

MODEL:	No. of Hook	Shedding Mode	Shedding Frequency	Transmission Joint	Adapted Looms	Applicable to Fabric
TJQ6000-1344	1344	Duplicate Up-Down	200-500t/min.	All Direction Axle and closed spiral Gear Drive	Rapier, Airjet, WaterJet, Projectile Looms	Jaquard for Terry Towel, Homefabric, Lable, and Tie, etc.
TJQ6000-2688	2688					
TJQ6000-6144	6144					
TJQ6000-12288	12288					

TEXLINK ENGINEERING(DONGGUAN) CO., LTD.

Address: Jian An Street, Lingxia Industrial Area, Liaobu Town, Dongguan 523409, P.R. China

Tel :86-769-88903381 Fax :86-769-88903382

Email : sales@texparts.com

<http://www.texparts.com>